



THE GLOBAL STAIRLIFT COMPANY

MediTek

Distributed in SE Wisconsin through:



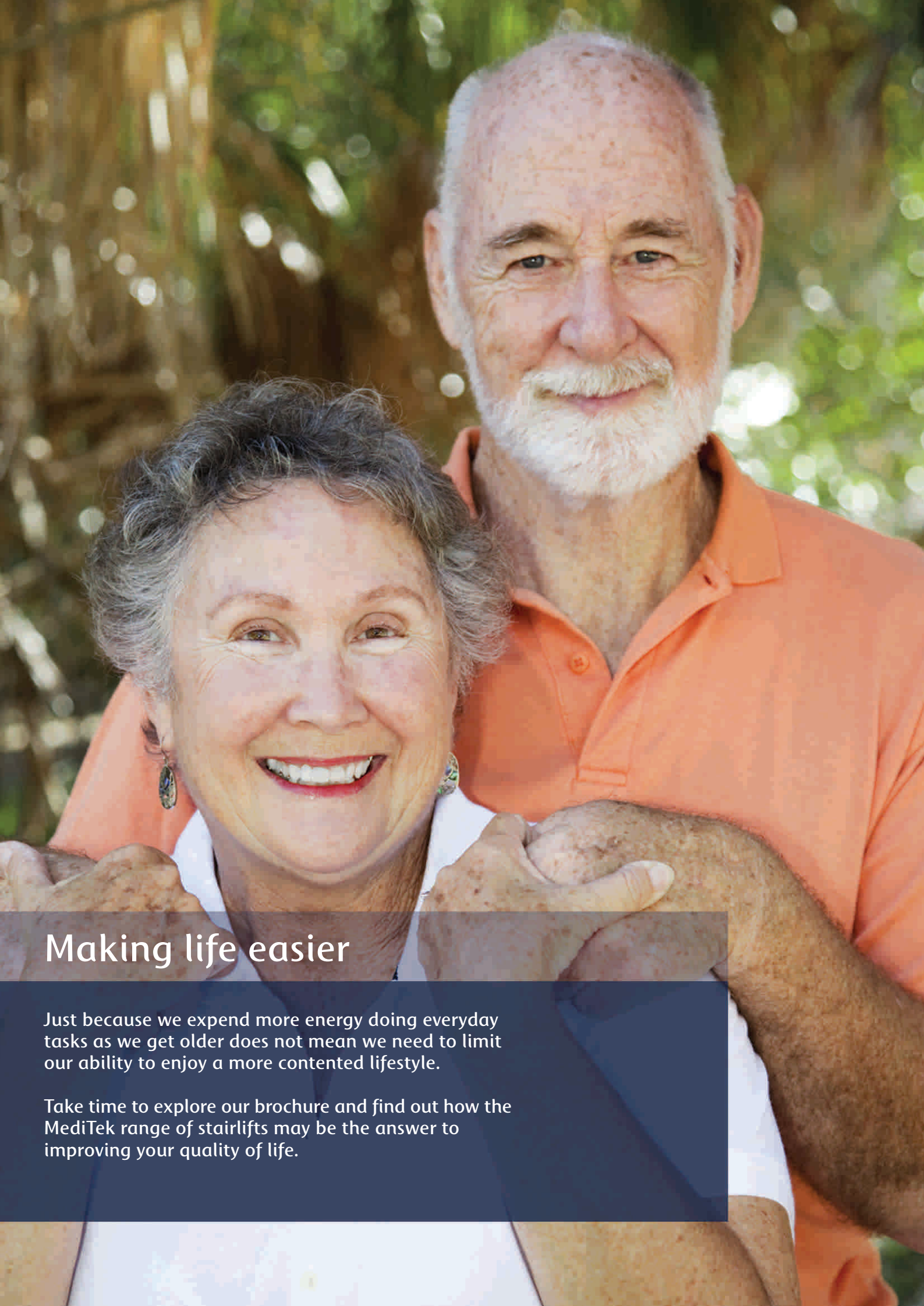
877-917-2273



STAIRLIFT
PRODUCT BROCHURE

Helping you
enjoy the things
you love





Making life easier

Just because we expend more energy doing everyday tasks as we get older does not mean we need to limit our ability to enjoy a more contented lifestyle.

Take time to explore our brochure and find out how the MediTek range of stairlifts may be the answer to improving your quality of life.

Modifying your home with Assistive Technologies



MediTek is a global stairlift manufacturer, with its North American headquarters and factory based in Apex, North Carolina.

Everyone at MediTek understands the real difference assistive technologies, such as domestic stairlifts can provide in helping to improve lifestyles and enabling you to enjoy more independence at home. That is why when you choose a MediTek stairlift you can be assured that your needs, comfort and dignity lay at the heart of our business practice.



One of the great benefits of life today is the ability to let technology take the strain. Assistive technologies exist to make life easier and allow us to enjoy a more relaxed, safer and leisurely lifestyle.

Modern homes are abundant with machines, gadgets and devices such as dishwashers, electric lawnmowers, vacuum cleaners and remote controls, all designed to aid, speed up or improve everyday activities.

From time to time, climbing steep stairs can be awkward and physically demanding for some people. A stairlift is an excellent "assistive technology" designed to simply provide an easy and convenient way of accessing upper floors quickly and safely, whenever required.

The MediTek stairlift range has been designed specifically for domestic application and will fit unobtrusively and gracefully into your home.

MediTek stairlifts come in a choice of different seat styles and upholstery colors – see specification sheet on page 7 for details*

Meeting your individual needs

At MediTek we appreciate that staircases, like people, come in many shapes and sizes. This is why our versatile product selection is wide-ranging enough to ensure there is a MediTek model just right for you.

To ensure the right stairlift is specified, trained advisors will visit your home by appointment. The advisor will consult, survey and assess the most appropriate solution to your specific needs and circumstances.

Whatever your requirements, be they straight stairs, curved stairs, narrow stairs, outdoor stairs, heavy duty or power assisted needs, rest assured there is a MediTek stairlift solution for you.

When not in use our stairlifts can be folded away and with slim profiles will not obstruct the stairway for use by other people.



Manual or optional powered swivel seats make alighting straightforward



Curved Lift

For staircases with multiple flights, corners and quarter landings



Perch Lift

For people who may have difficulty bending their knees



External Lift

Ideal for any stairs exposed to the elements, such as gardens or cellars

To ensure your lift is simple and effortless to operate, MediTek stairlifts have been specifically designed with ease of use and comfort in mind. The continuously charged on-board batteries ensure that your lift will continue to operate even in the event of a mains power failure.

The product range includes a number of safety features that will provide you with many years of safe and reliable enjoyment and use of your stairlift.



Safety edges

Pressure sensitive edges automatically stop the lift if they sense an obstruction

Joystick

The joystick makes for finger light control



Remote Controls

Wireless wall mounted or hand held remotes can be used to call and park the lift

Hinged Tracks

Manual and automatic hinged tracks fold away allowing full access to a doorway or open corridor



Diagnostics

The diagnostic display indicates lift status and provides service information

Seat Belts and Harnesses

All lifts come with a seat belt as standard to provide additional security with an optional range of speciality harnesses and child seats available*



Key Switches

Optional key switches can be fitted to prevent unauthorised use of the lift

Footrest Raisers

Optional footrest raisers can help fold away the lift for those who have difficulty in bending

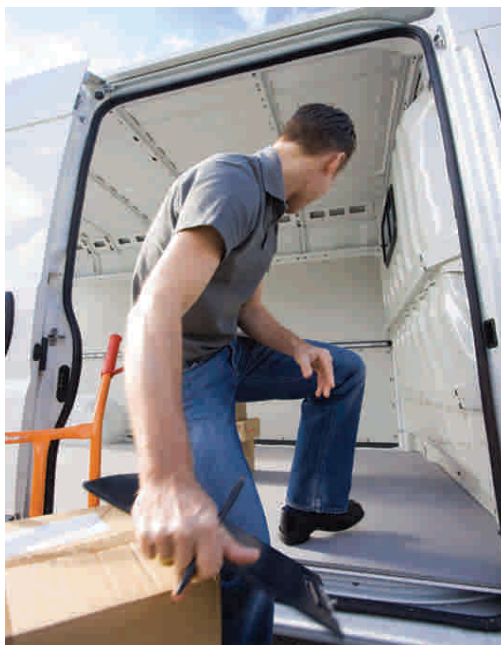


* see specification sheet for details

Engineering excellence and Quality Assurance

Engineering excellence is at the heart of the design and manufacture of MediTek stairlifts. We use quality components and proven technology to ensure many years of safe and reliable service.

MediTek invests significantly in product development and stairlift design and are proud to be leading the industry and achieving the very highest standards available.



All our North American stairlifts are made to order and assembled in the USA. Each lift is thoroughly checked and tested before leaving the factory and comes with a full warranty and guarantee.

Peace of mind

MediTek takes its corporate responsibilities seriously and is member of the Accessibility Equipment Manufacturers Association (AEMA) and complies to its articles of association and codes of conduct.

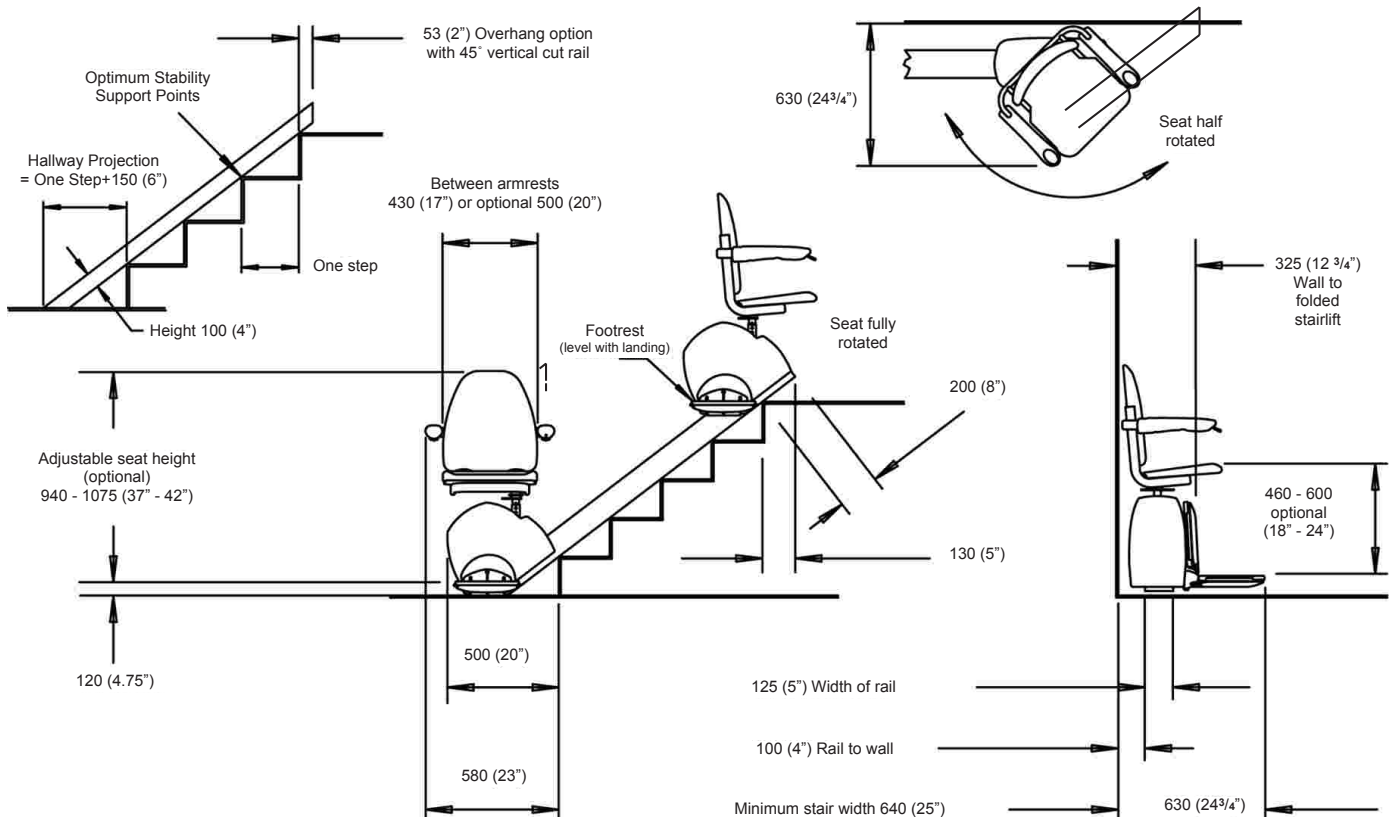
The technical information detailed on this page relates to the standard straight lift. Additional technical specifications on this and all other products and options are available upon request.

Stairlift specification and technical information

MediTek Straight Stairlift Specification

| | |
|-------------------------------|--|
| Maximum user weight capacity: | Single user 160Kg (25st) |
| Maximum speed: | 0.09 m/sec (16 Ft/min). |
| Drive Method: | Steel rack and pinion drive system |
| Motor: | 24 v DC motor, 200W |
| Brake: | 24 v DC electro-magnetic, gearbox mounted brake |
| Gearbox: | Worm and wheel self locking drive with oil lubrication |
| Carriage construction: | Fabricated steel chassis plate construction |
| Rail: | Extruded aluminium section |
| Stair angle range: | 25 degrees to 50 degrees |
| Safety measures: | Over speed governor activated brake |
| Power supply: | 240v AC @ 50 Hz (input) / 33 v DC @ 1.3 A (output) UL listed E188603 |
| Carriage power supply: | 24 v DC (supplied by 2 x 12 v 7.2 A/Hr batteries) |
| Battery charging: | Continuous battery charging via buzz bar mounted to rail |
| Guide rollers: | 12 x rollers with sealed lubricated ball bearings |
| Seat: | Steel frame with padded folding swivel seat & folding arms |
| Isolation key switch: | Available as an option |
| Remote controls: | 2 x Infra-red remote controls supplied as standard |
| Footrest: | Steel fabricated folding footrest with 3 x safety edges |
| Lap seatbelt: | Supplied as standard |
| Extra Long Seatbelt: | Available as an option |
| Ankle straps: | Available as an option |
| Junior para harness: | Available as an option |
| Adult para harness: | Available as an option |
| Powered folding track: | Available as an option |
| Manual folding track: | Available as an option |
| Heavy duty folding track: | Available as an option (max weight capacity 160kg (25st)) |
| Powered swivel seat: | Available as an option |
| Seat to footrest link: | Available as an option |
| Applicable standards: | BS:5776 & PrEN 81:40 |

MediTek stairlifts are available in a choice of fabric colors to suit most decors.



All dimensions in mm (inches) and can vary depending upon angle of staircase. MediTek reserves the right to amend the technical specifications without prior notification.

MediTek - Assistive Technologies to enhance independence

To find out more about MediTek stairlifts and the products we have to offer, or to arrange for a survey in your home, please contact us or visit your local authorised retailer.



Distributed in SE Wisconsin through:



877-917-2273